

EAS Compute Cloud Service

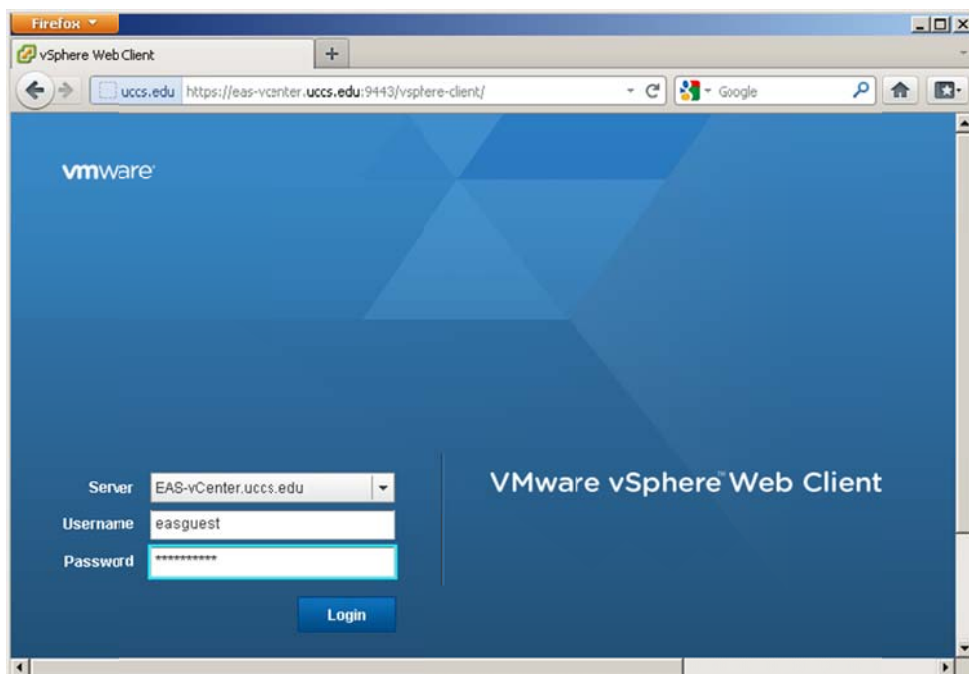
EAS Compute Cloud Service is a web based service that provides users with a simple interface to build, configure, manage, and have control of their virtual computing resources. This service can provide users with reduced time to provision computing resources down to minutes rather than weeks that it would ordinarily take to procure, ship, and provision a physical system. This service allows users to access their virtual machine settings and console via Firefox or Internet Explorer on many popular operating system to build your custom compute environment.

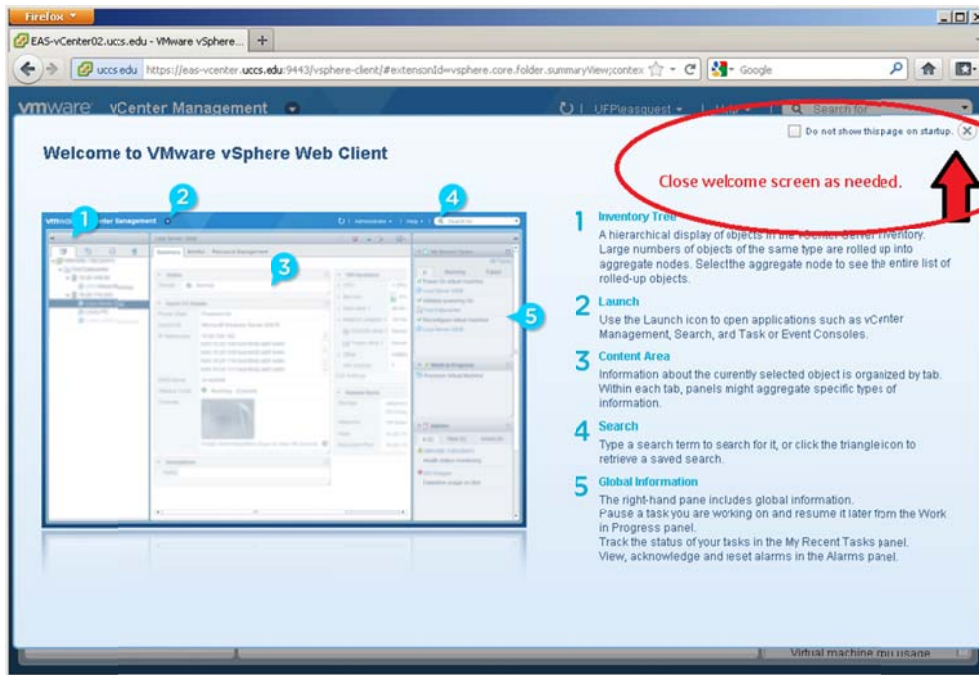
Resources Available/Shared

General	
vSphere DRS:	On
vSphere HA:	On
VMware EVC Mode:	Intel® "Nehalem" Gen. (Xeon® Core™ i7)
Total CPU Resources:	255 GHz
Total Memory:	703.91 GB
Total Storage:	99.63 TB
Number of Hosts:	7
Total Processors:	108
Number of Datastore Clusters:	2
Total Datastores:	12

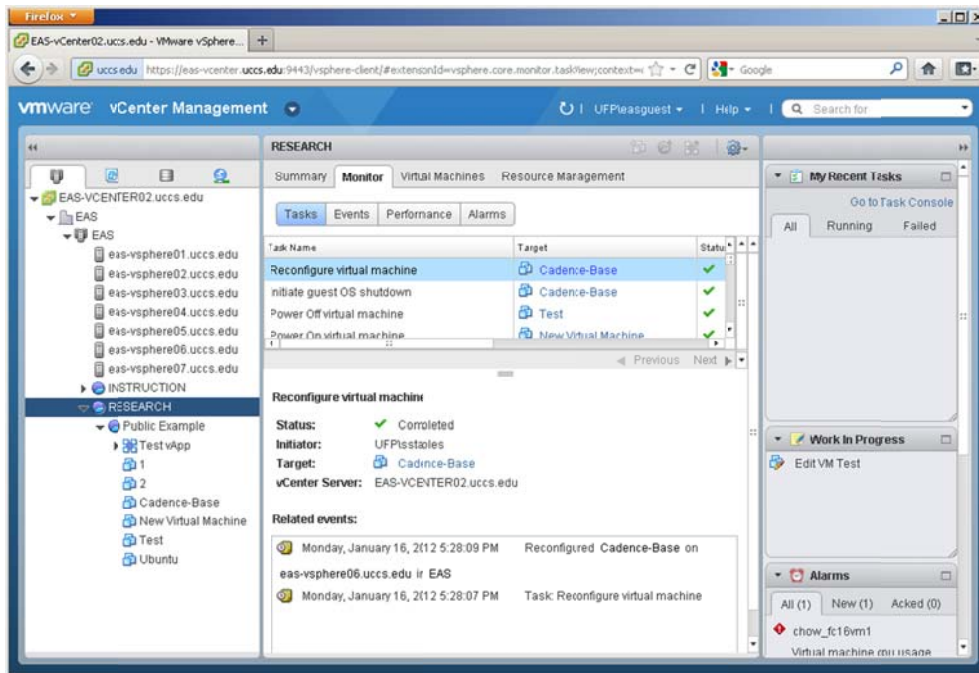
Connecting to EAS Compute Cloud Service

- You must have already requested or have been given UCCS username account access into the EAS Compute Cloud. Many Engineering and Applied Science classes/labs and researchers are registered.
- Point your Firefox or IE (Internet Explorer) browser to <https://eas-vcenter.uccs.edu:9443/vsphere-client>.
Notes: Off-campus access if available via VPN into campus first. Log in with UCCS username and password. Ignore certificate warnings at this time. You will need Adobe Flash 10.x or greater to log into site. Users running 64-bit RHEL 6.x and variants (CentOS, Scientific Linux, etc.) or 64-bit Ubuntu 11.x is support using the detailed instructions at bottom of page for 64-bit RHEL 6.x and variants and Ubuntu 11.x. Access via MAC OSX is not yet provided but is in future path of VMware.

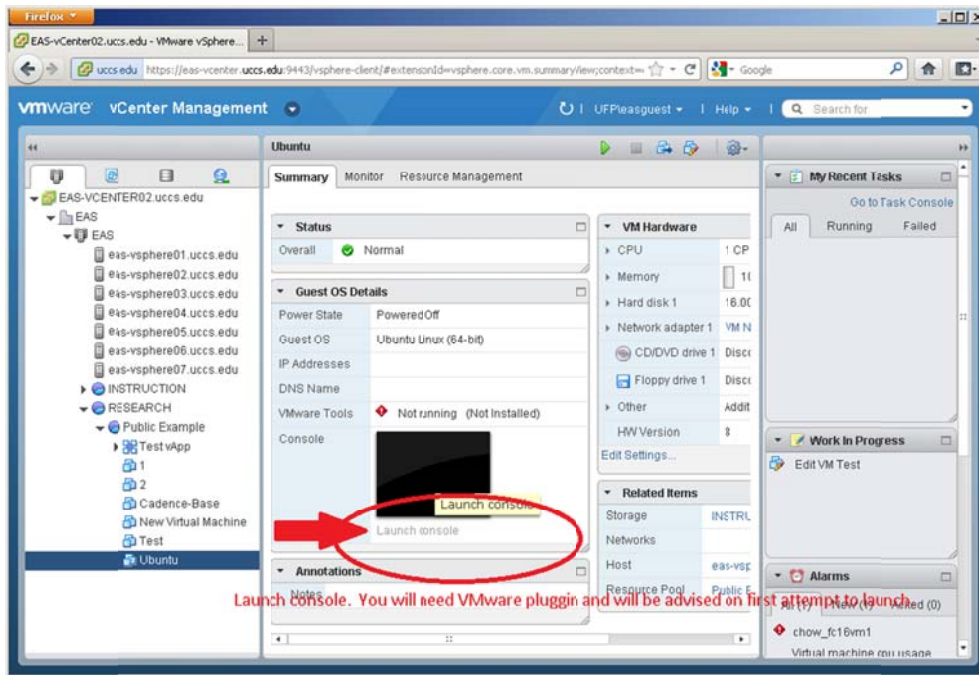




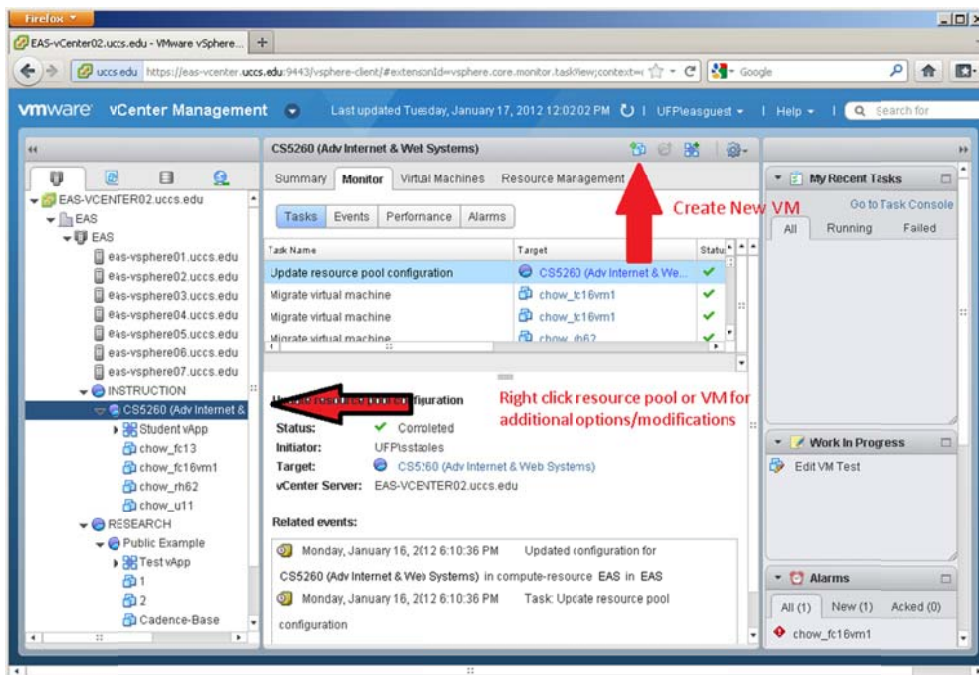
- Drop into the left side window and expand “EAS-vCenter”. There you will see a hierarchy of resources available based on your username access permissions.



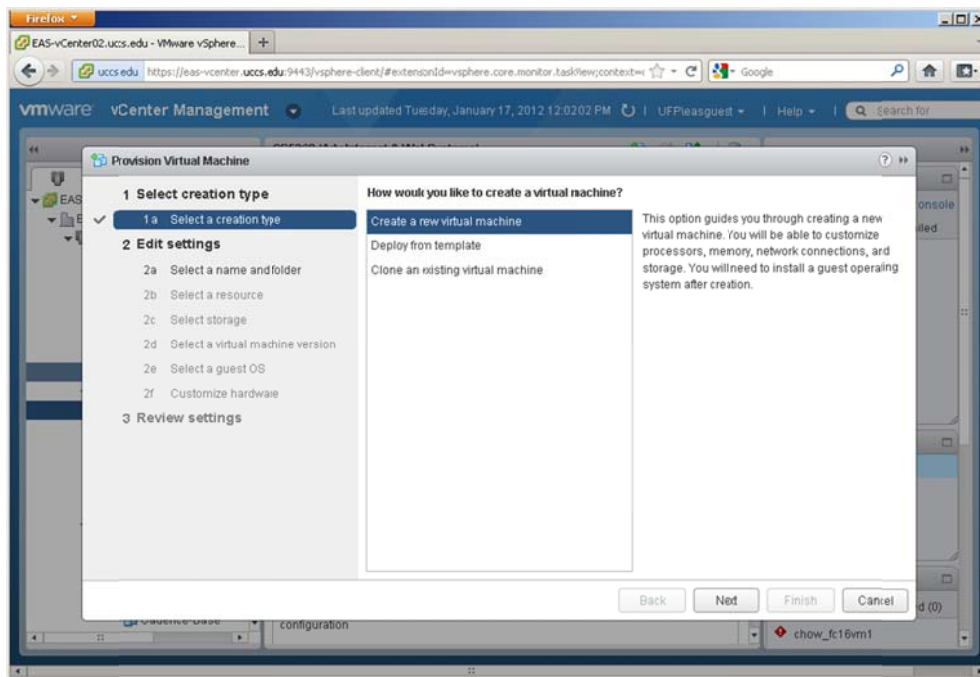
Launch a remote console. You will need to install a VMware plug-in on first attempt.



- Create a new Virtual Machine (VM)



- Step through the "Provision Virtual Machine" menu.



- You will become familiar with this new interface with time.

Documentation provided courtesy of:
Sean E. Staples, IT Professional